

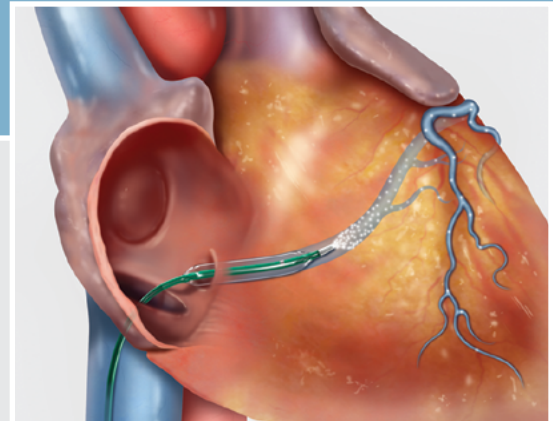
Advance[®] CS

CORONARY SINUS INFUSION CATHETER

Used for temporary occlusion of the coronary sinus for infusion of contrast media or therapeutic agents, or for possible introduction of devices into the coronary venous system.

The Advance CS Coronary Sinus Infusion Catheter features:

- A large, .038 inch (.97 mm) diameter distal lumen for infusion of therapeutic agents.
- A nominal and maximum recommended balloon pressure of 2 atm for all balloon sizes.
- A variety of balloon diameters and lengths for different patient anatomies.

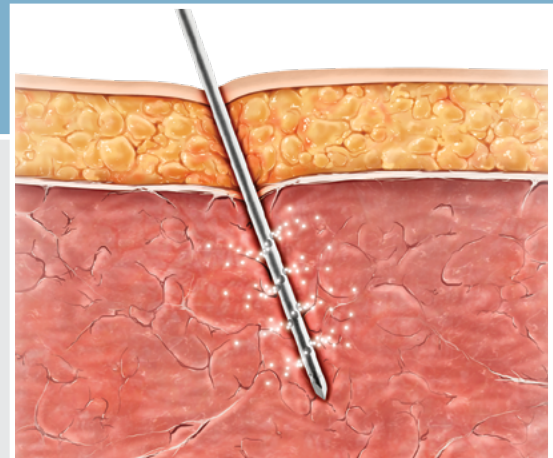


ProFusion[™]

THERAPEUTIC INFUSION NEEDLE

Used for intramuscular or subdermal infusion of diagnostic and therapeutic agents.

- The 1 cm infusion segment has sideports that are arranged in a spiral to uniformly deliver therapeutic agents.
- The needle has a trocar tip to allow precise needle placement.
- The sideports are highly visible under ultrasound to allow visualization for targeted therapeutic delivery.



www.cookmedical.com

Customer Service

For more information, contact customer-service@cookregentec.com or call +1.800.265.0945. Some products may not be available in all markets.

Cook Medical
P.O. Box 489, 750 Daniels Way
Bloomington, IN 47402-0489, USA